

DESIGNED ARCHITECTURAL LIGHTING



COMPACT 89

COMPACT



Average Efficiency 140lm/W

LIGHT ENGINE

Beam Angle	21°	33°	44°	54°	
Lumen Package	700lm/5W	900lm/6W	1100lm/8W	1300lm/10W	
Control	NON DIM	1-10V	DALI	LEAD/TRAIL	CASAMBI
Ingress Protection	IP20	IP44			

Light Source	High Quality LED	Colour Rendering	Excellent CRI > 90 Macadam 2 Step (other CRI available on request)
Longevity	50,000 hrs L80 (min)	Electrical Supply	230v 50/60Hz

2700K

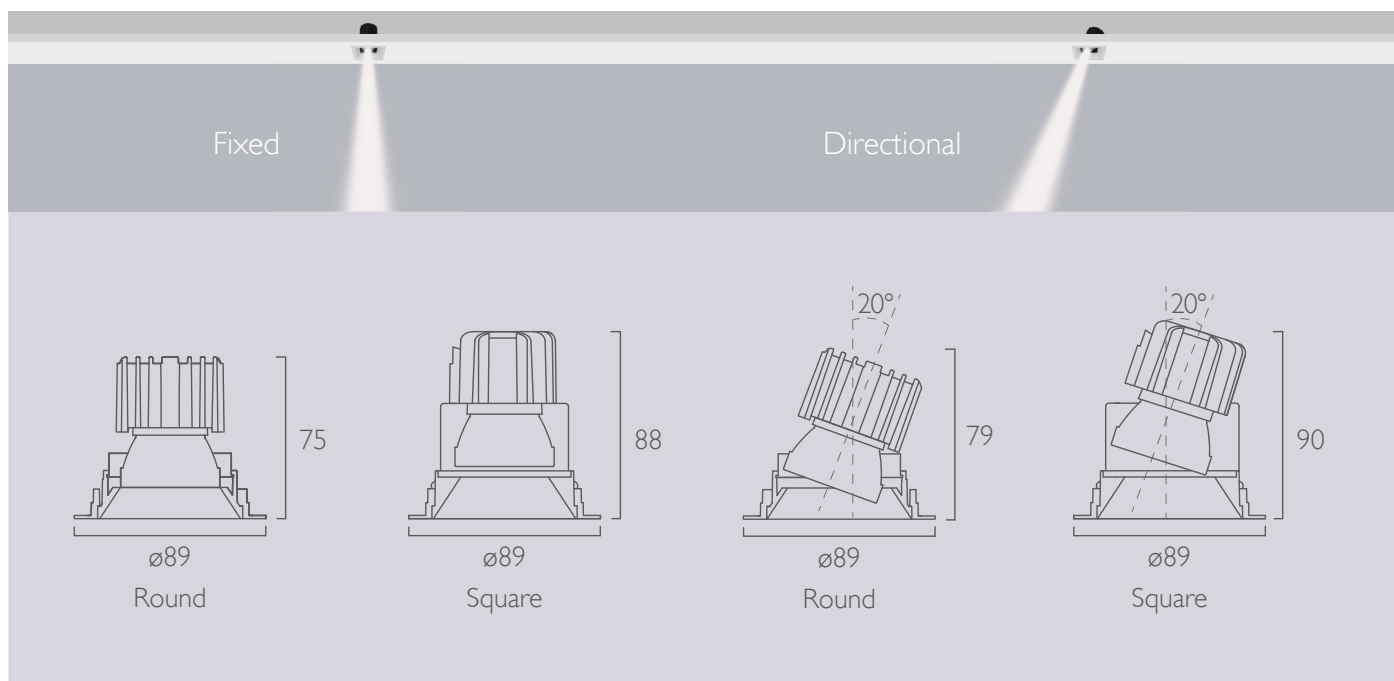
3000K

4000K

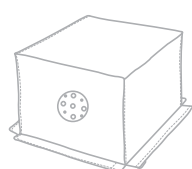
(other color temperature available on request)

Light Source Options





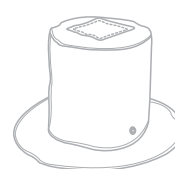
FIREHOOD COMPATIBILITY



Square

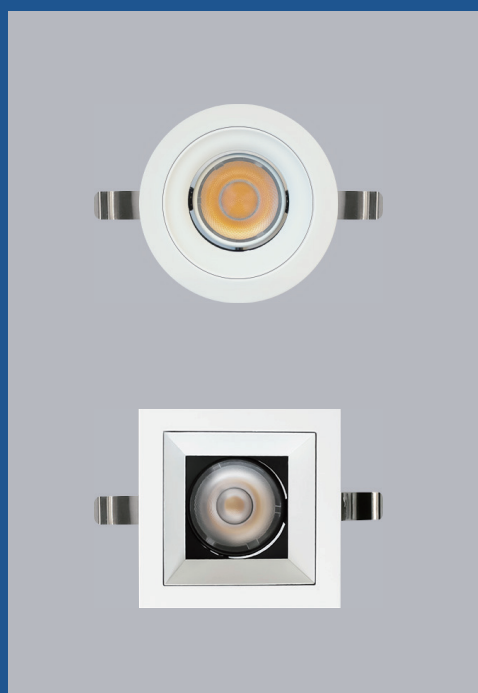


Cone



Round

There are a number of sizes available in the market with varying shapes and materials. For Compact 89 a typical dimension of **150 x 150 mm** will be suitable. Please refer to the manufacturer installation guide for suitability.



Product Coding

P3F3407J250S420 Example

Series	Type	Distribution	Reflector Colour	Initial Lumen	LED	Colour Temp	Driver Protocol	Emergency Protocol	Shape	Trim Colour	IP	Accessories
Compact89	F Fixed	3 21-30°	1 Specular Silver	07 700 lm	J Cree	2 2700K	0 Non Dim	0 None	R Round	L Trimless	2 IP20	0 None
	A Adjustable	4 31-40°	2 Satin Silver	09 900 lm	CRI > 90	3 3000K	1 1-10V	E Emergency	S Square	1 Specular Silver	4 IP44	1 Honeycomb
	S Single WW (on request)	5 41-50°	3 Black	11 1100 lm	2 Steps	5 4000K	5 DALI	N Non maintained		2 Satin Silver		2 Elliptical Film
		6 51-60°	4 White	13 1300 lm		7 Lead / Trail			3 Black		3 Frosted Glass	
	D Double WW (on request)		5 Gold		8 Casambi		4 White					
			6 Bronze		9 Addressable (Emergency)		5 Gold					
			7 Copper			6 Bronze						
		8 Spectro Silver			7 Copper							
				8 Sepctro Silver								
P3	F	3	4	07	J	2	5	0	S	4	2	0

REFLECTOR COLOUR OPTIONS



Black



White



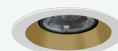
Satin Silver



Specular Silver



Spectro Silver



Gold



Bronze

TRIM OPTIONS



Black



White



Satin Silver



Specular Silver



Spectro Silver



Gold



Bronze



Trimless

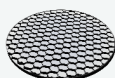


Slot



Pinhole

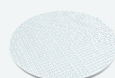
ACCESSORIES



Honeycomb



Linear Spread Lens



Heavy Spread Lens



Warm Tone Lens



DESIGNED ARCHITECTURAL LIGHTING

sales@dal-uk.com

+44(0)207 4903998

6-14 Underwood Street,
London, N1 7JQ



www.dal-uk.com